

Specifications

Travel	Unit	VC0852	VC1052	VC1200	
X-axis	mm	860	1060	1270	
Y-axis	mm	520	520	660	
Z-axis	mm	610	610	610	
Dist. from spindle nose to table	mm	115-725	115-725	150-760	
Table					
Dimension	mm	1000x520	1160x520	1500x660	
Max. load	kg	500	650	1360	
T-slot (width x pitch x number)	mm	18x100x5	18x100x5	18x100x6	
Spindle					
Spindle type	-	Belt type	Belt type	Direct drive	
Spindle speed	rpm	12000	12000	12000	
Motor power (cont./S3-25%)	kW	7.5/15	7.5/15	7.5/15	
Spindle taper	-	BT40	BT40	BT40	
Feed rate					
Rapid traverse (X/Y/Z)	FANUC SPEC.	m/min	36x36x24	36x36x24	36x36x24
	MITSUBISHI SPEC.(Opt.)	m/min	48x48x36	48x48x36	36x36x24
Cutting feedrate		mm/min	1-12000	1-12000	1-12000
Motor					
Motor power (X/Y/Z)	FANUC SPEC.	kW	1.8/3.0/2.5	1.8/3.0/2.5	4.0/ 4.0/ 7.0
	MITSUBISHI SPEC.(Opt.)	kW	2.2/2.2/3.5	2.2/2.2/3.5	3.5/3.5/4.5
ATC & Magazine					
ATC type	-	Arm type	Arm type	Arm type	
Magazine capacity	pcs	24	24	30	
Max. tool diameter : (Adjacent pots Empty)	mm	80/150	80/150	80/125	
Max. tool length	mm	300	300	300	
Max. tool weight	kg	7	7	7	
Space & System requirement					
Pneumatic pressure	kgf/cm ²	6	6	6	
Electrical power consumption	kVA	30	30	35	
Machine net weight	kg	6000	6200	9000	
Max. floor space (WxLxH)	mm	4629x3743x3099	4957x3743x3099	5280x3550x3100	

Specification are subject to change without notice

1.All data listed here are based on machines with standard accessories. Data will be altered according to different options.
For detailed information, please refer to local agents or Takumi sales.
2.Takumi reserves the rights on the modifications of the machine specifications.

Standard Accessories

- ◆ FANUC 0i-MF controller
- ◆ VC0852/VC1052
12000rpm, BT40, belt type spindle
24T, BT40, arm type ATC
- ◆ VC0852+ /VC1052+
15000rpm, BBT40, direct drive spindle
- ◆ VC1200
12000rpm, BT40, direct drive spindle
30T, BT40, arm type ATC
- ◆ Spindle air blast
- ◆ Cutting air blast
- ◆ Spindle cooler
- ◆ Cutting coolant system
- ◆ Automatic centralized lubrication system
- ◆ Fully enclosed splash guard
- ◆ Chip auger with lift up exhaust tube (VC0852/VC1052)
- ◆ Belt type chip conveyor (VC1200)
- ◆ Working lamp
- ◆ Indication lamp
- ◆ Washing gun & air gun
- ◆ Coolant tank & coolant flushing system
- ◆ Manual pulse generator (MPG)
- ◆ Ethernet RJ45 & RS-232C interface
- ◆ Heat exchanger for electrical cabinet
- ◆ Tool kits
- ◆ Leveling blocks and bolts
- ◆ Operation manuals
- ◆ One year machine warranty (Spindle warranty depends upon spindle manufacturer)
- ◆ Controller warranty (Controller warranty depends upon controller manufacturer)

Optional Accessories

- ◆ MITSUBISHI M80A controller
- ◆ 12000rpm, BT40, direct drive spindle (VC0852/VC1052)
- ◆ 12000rpm, BT40, belt type spindle (VC1200)
- ◆ 15000rpm, BBT40, direct drive spindle
- ◆ 40T, arm type ATC (VC1200)
- ◆ Coolant through spindle (30 bar)
- ◆ Oil skimmer
- ◆ Oil mist device
- ◆ Oil mist collection
- ◆ Roller type linear guide way
- ◆ 3-axis roller type linear guide way 45mm (VC0852+ /VC1052+)
- ◆ Air conditioner for electrical cabinet
- ◆ Ballscrew cooling system (VC0852/VC1052)
- ◆ Tool length measurement system
- ◆ Workpiece measurement system
- ◆ 4th axis rotary table
- ◆ Belt type chip conveyor (VC0852/VC1052)
- ◆ Scraper type chip conveyor
- ◆ Transformer
- ◆ CE mark (CE region only)
- ◆ FANUC upgraded motor 3.0/3.0/2.5 (VC0852+ /VC1052+)
- ◆ MITSUBISHI upgraded motor 3.5/3.5/3.5 (VC0852+ /VC1052+)



Vertical Machining Centers

- ◆ High Speed & High Precision
- ◆ 3 Axes Linear Guide Ways
- ◆ Rigid Structure Design



Takumi

Takumi

No.10, Gong 10th Rd., Dajia Dist., Taichung City 437, Taiwan

Tel: 886-4-26811215 Fax: 886-4-26822803

Website: <http://www.takumi.com.tw>

E-mail: sale-os@takumi.com.tw

Takumi
CERTIFIED
ISO 9001



A division of Hurco Companies, Inc.





The Achievement of Takumi's Innovation and Technology

The Perfect Performance of Fast Cutting and High Stability



VC series is specially designed for 3C and mold manufacturing industries. To meet the requirements of fast cutting, 3 axes are equipped with linear guide ways. The highest rapid traverse reaches 48 m/min (MITSUBISHI NC).



The rotary operation panel allows the user to operate it at any position.

Large window on the door provides users clear visibility.



All accessories are covered inside the box-shape enclosure, which not only minimizes floor space, but also reduces the cost of installation & transportation.

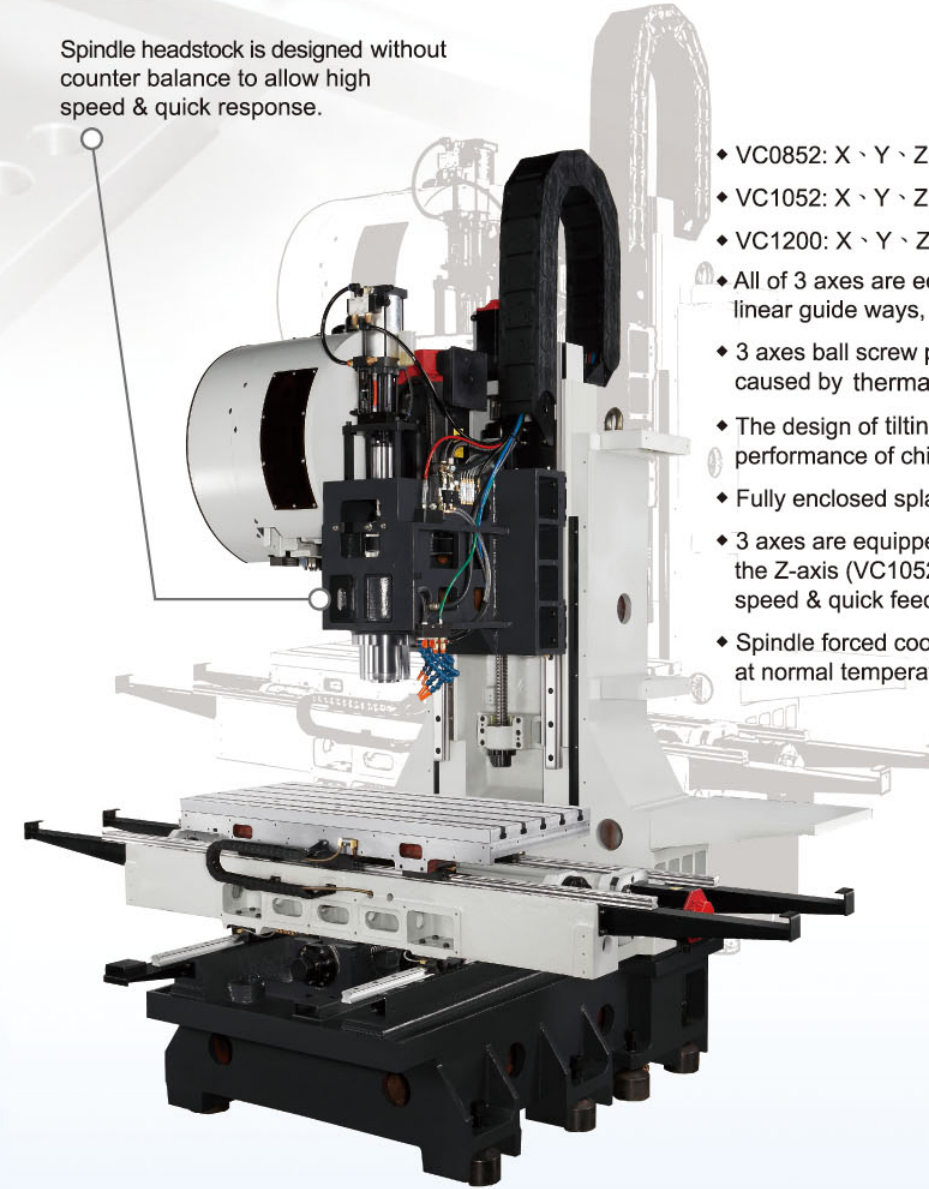
Large internal space can reduce working interference effectively.

Table is higher than the bottom rim of the side windows, making the workpiece set-up easier.



The design of sloping bed surface with flushing coolant system remove chips effectively and keep the working zone clean.

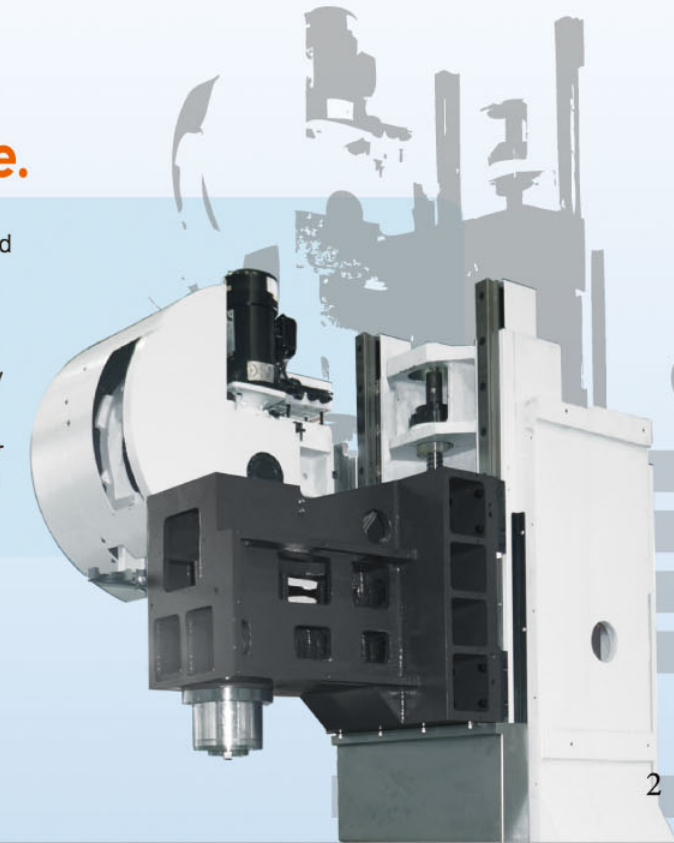
Spindle headstock is designed without counter balance to allow high speed & quick response.



- ◆ VC0852: X · Y · Z travel: 860x520x610mm.
- ◆ VC1052: X · Y · Z travel: 1060x520x610mm.
- ◆ VC1200: X · Y · Z travel: 1270x660x610mm
- ◆ All of 3 axes are equipped with high pre-stretched high rigidity ball type linear guide ways, providing fast movement with low abrasion.
- ◆ 3 axes ball screw pretension design reduces the thermal deformation caused by thermal effect, offering the best accuracy.
- ◆ The design of tilting bed surface, flushing coolant system provides perfect performance of chip removal.
- ◆ Fully enclosed splash guard provides operator safety during operation.
- ◆ 3 axes are equipped with ball type linear guide ways, 6 guide blocks on the Z-axis (VC1052) & 4 guide blocks on the X/Y axis, allowing high speed & quick feed response.
- ◆ Spindle forced cooling system to ensure the operation of the spindle at normal temperature for superior machining accuracy.

High Rigid and High Stable Structure.

- ◆ Bed, column, saddle and other main castings designed for high rigidity and released the stress by heat treatment, ensuring the best structural stability and positioning accuracy.
- ◆ The assembling space between bed and column, where machining stress concentrated on, is enhanced to provide powerful and stable cutting ability to spindle.
- ◆ The best design of cast iron weight. The stable bed and column, altogether with lightweight design of head, saddle and table, provide the best stability during high acceleration and deceleration movement.





High Accuracy / Performance Spindle



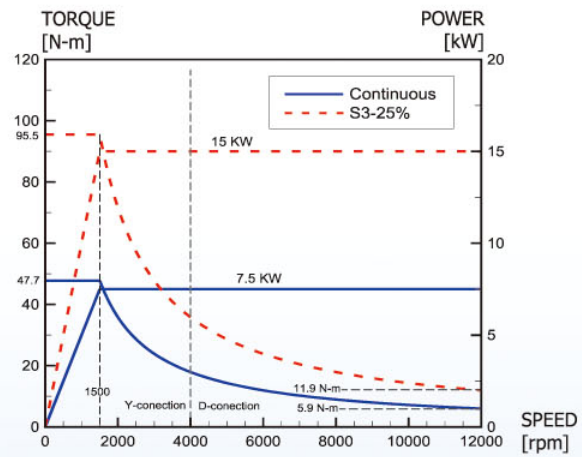
■ Belt Type Spindle

- ◆ Spindles are made by Taiwanese professional spindle manufacturers, featuring high accuracy and high performance.
- ◆ Spindle cooling system reduces thermal deformation and prolongs the service hour of spindle.

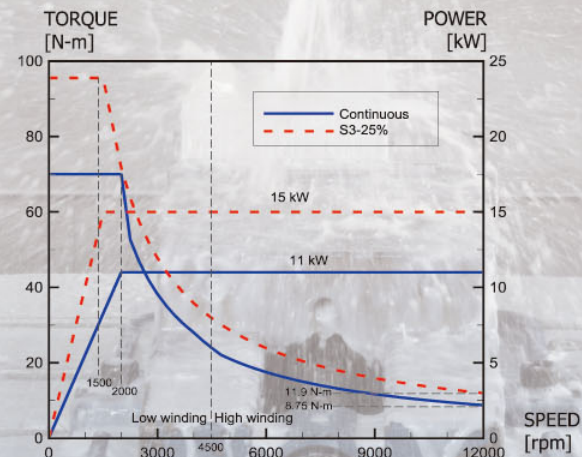


Power & Torque Chart

■ Belt type / Direct-drive spindle, 7.5/15kW, 12000rpm (Standard)

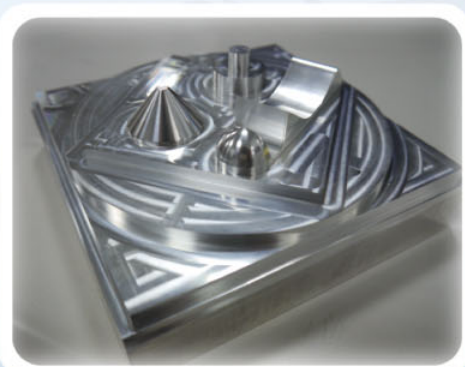


■ Belt type / Direct-drive spindle, 11/15kW, 12000rpm (Optional)

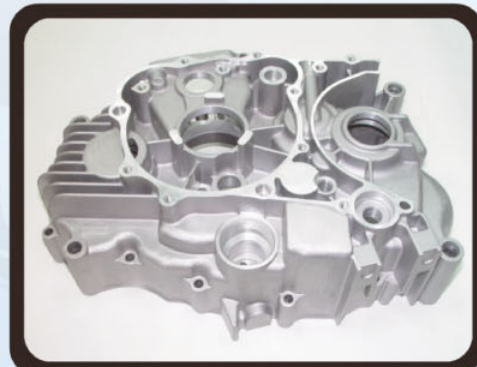


Max. Excellent Cost/Performance Value

VC series is designed to meet the requirements of fast cutting for the industries of 3C parts machining and mold machining. Excellent performance can decrease the mold delivery, processing costs and improve product competitiveness.



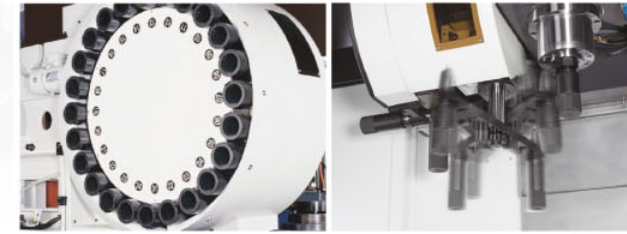
TAKUMI Test cutting workpiece
Material: Aluminum 7075
Application:
Surface / acute angle / positioning precision
excellent performance



Hood test cutting workpiece
Material: Aluminum 7075
Application:
High speed working on different angle & surface



ATC & Magazine



24T, BT40, ARM type ATC (Standard)



Optional Accessories



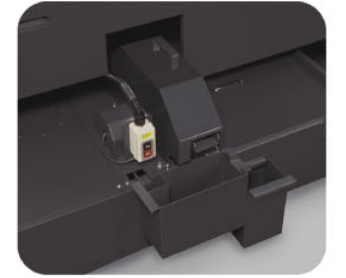
■ Workpiece measurement system



■ Tool Length measurement system



■ Chip conveyor/ Cart



■ Oil skimmer



■ Coolant through spindle



■ 4th axis rotary table



■ Oil mist collector

Quality Management (ISO 9001:2008)



■ Laser inspection



■ Ball bar inspection



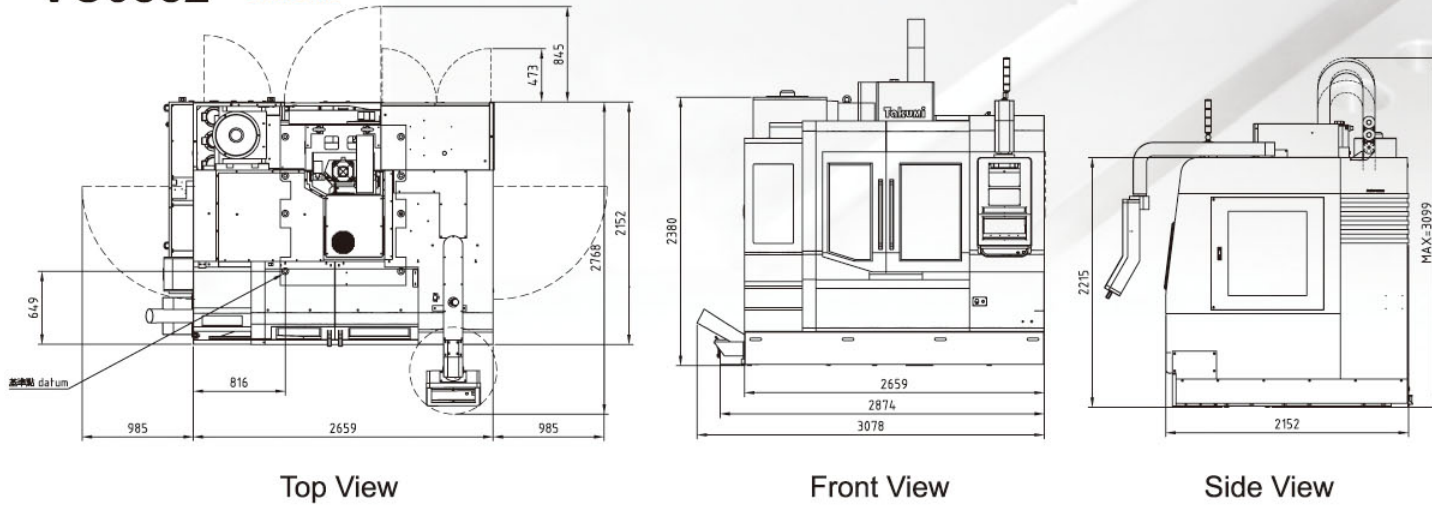
■ Spindle running test



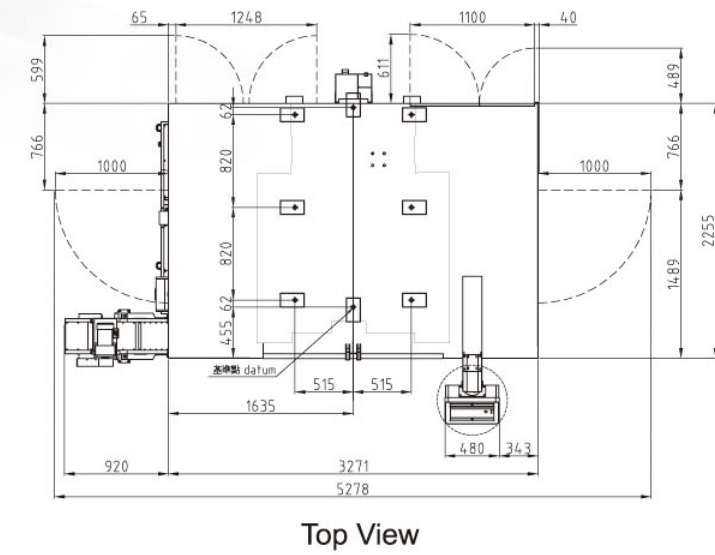
Dimensions



VC0852 Unit: mm



VC1200 Unit: mm



VC1052 Unit: mm

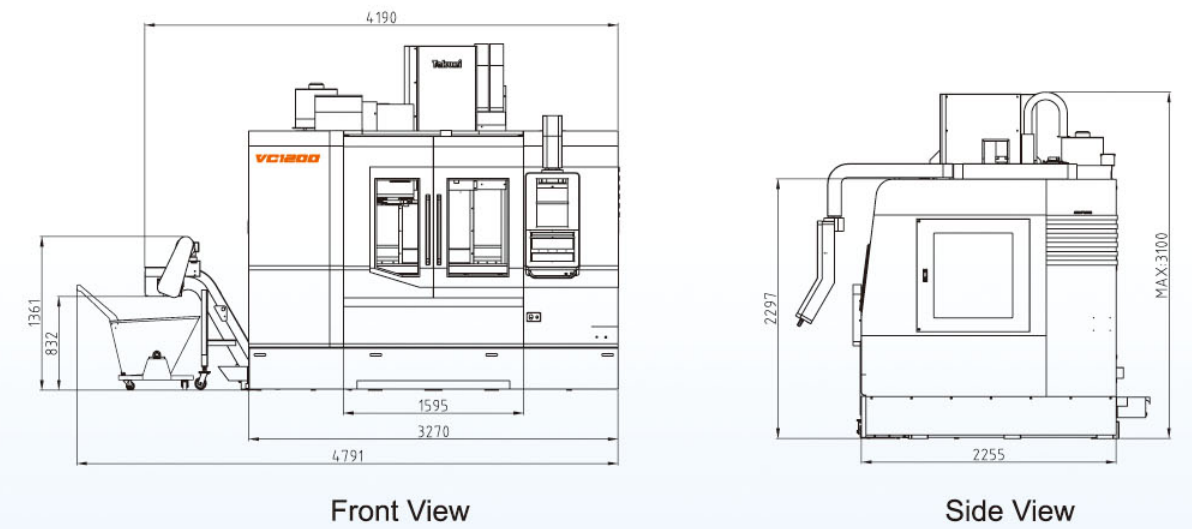
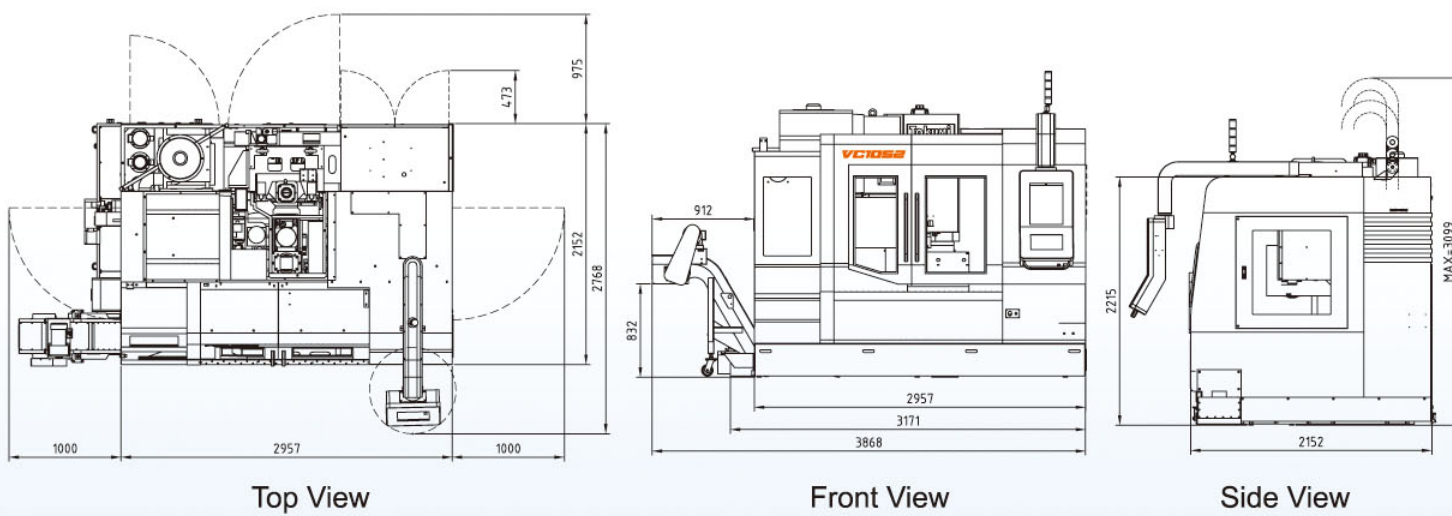
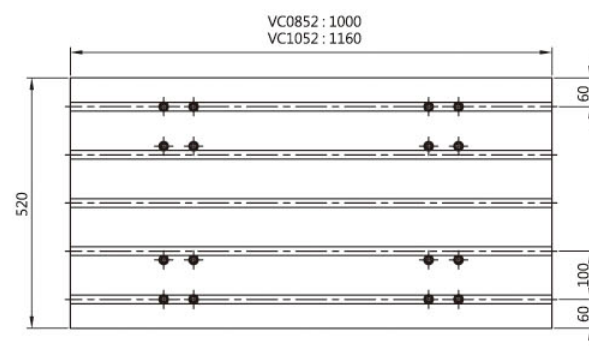


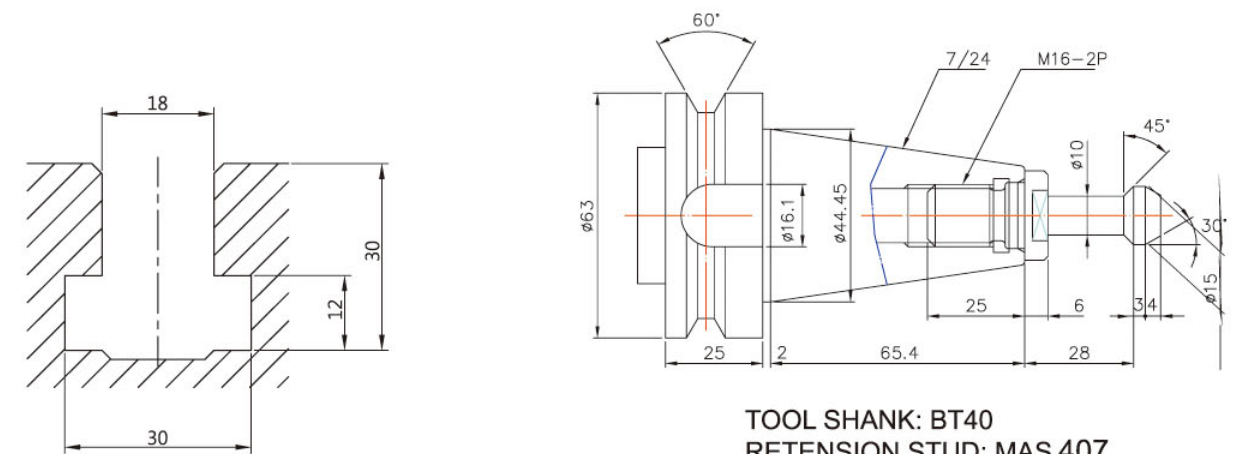
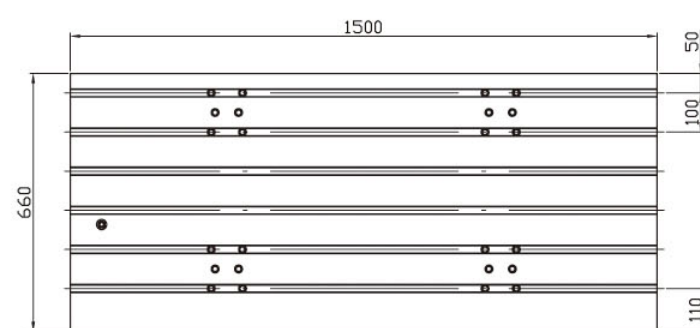
Table & T-slot

Unit: mm

VC0852 / VC1052



VC1200



TOOL SHANK: BT40
RETENSION STUD: MAS 407

Specification are subject to change without notice